

100% Granular Clay Absorbent

Thrifty-Sorb[®]



Automotive



Oil Distribution



Hardware

- ◆ **Made from Montmorillonite Clay, a naturally occurring mineral, with superior absorptive ability**
- ◆ **Liquids adhere to the surface pores allowing quick cleanup of water, oil, grease, water coolant, and much more**
- ◆ **#1 Automotive Retail Product**
- ◆ **Versatile for all non-aggressive fluid cleanup**
- ◆ **Suitable for home and work environment**
- ◆ **Smaller particles allow product to be more concentrated permitting quicker absorption**
- ◆ **100% Natural Mineral**
- ◆ **NSF Registered**

Ep Minerals[®]
A U.S. SILICA COMPANY

(800) 366-7607 • www.epminerals.com



**Gray Medium
Coarse Granulation**

THRIFTY-SORB® is perfect for a variety of applications...

- ◆ **Automotive Retailers, Dealers, Repair Garages, Body Shops**
- ◆ **Hydraulic and Chemical Spills**
- ◆ **Manufacturing Facilities**
- ◆ **Home: concrete driveways, garage floors, bottom of garbage can to absorb moisture, paint spills**

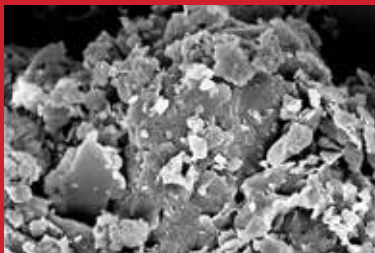
Part #	Weight	Bag Type	Pallet Configuration	Plant
8440	40 lb	Poly	Bags per Pallet: 50 Pallet Size: 40 x 48" Pallet Height: 48"	Middleton

For more information on Thrifty-Sorb or to request a free sample kit, please call your sales representative or contact us directly at (800) 366-7607 or visit www.epminerals.com.

What is Montmorillonite Clay?

There are many types of clay minerals from all over the world. EP's clay minerals, known as Montmorillonite clay, are part of the Smectite group of clays mined in the central region of the US identified as the mid-continent vein. Once mined, the clay is processed at high kiln temperatures allowing pore expansion and increased hardness. Due to high pore space and high surface area, clay absorbs liquid on the outer layer through external pores.

Microscopic View of Clay



Clay Prior to Mining & Processing



EP Minerals®
A U.S. SILICA COMPANY

(800) 366-7607 • www.epminerals.com